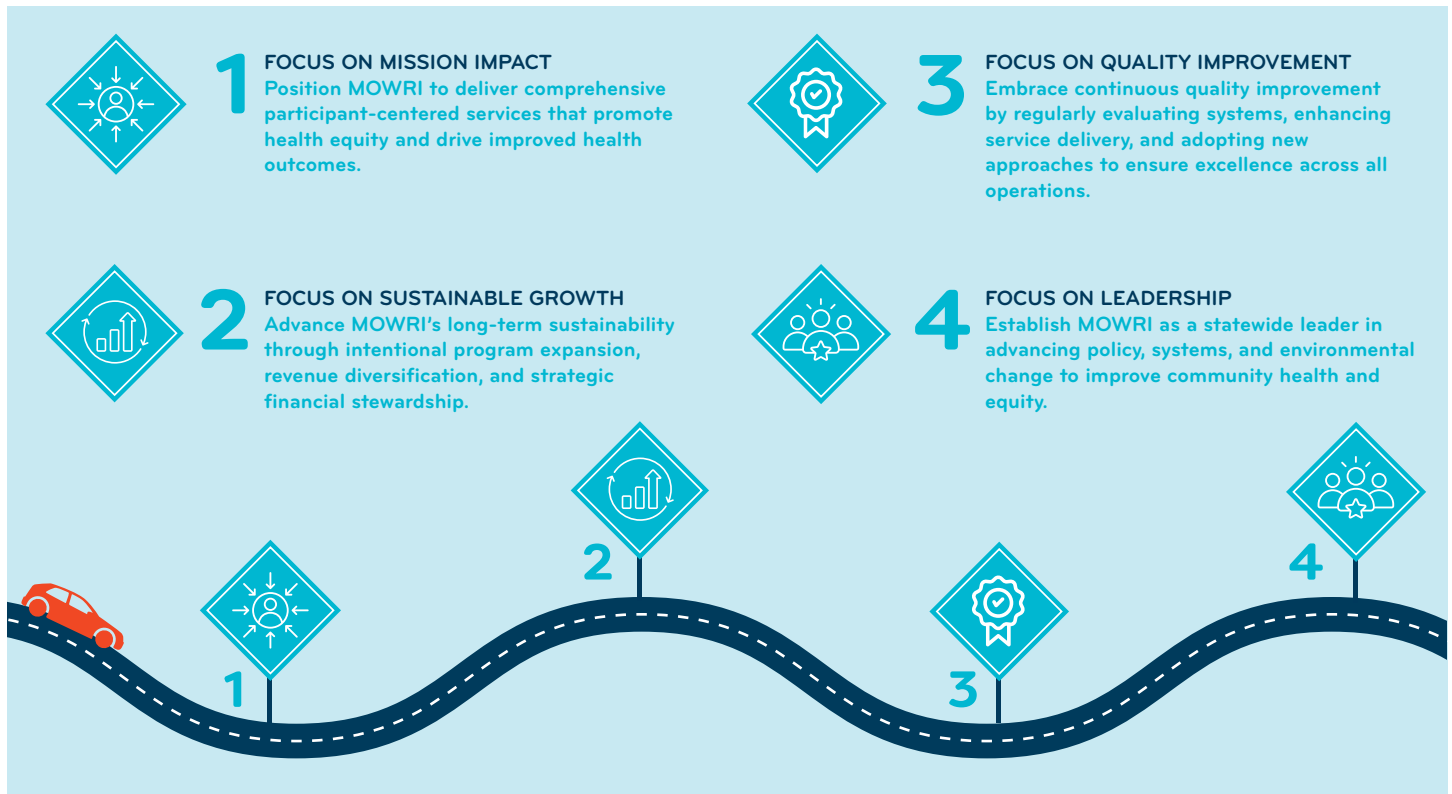


MOWRI 2030

Building Resilience, Deepening Impact

In 2025, Meals on Wheels of RI proudly delivered its 21 millionth meal, a milestone that invites us to look ahead with excitement and purpose. “Building Resilience, Deepening Impact” is a bold strategy with four core pillars that will propel the organization toward long-term sustainable growth and advance its mission impact across the state.



VISION

A Rhode Island where all individuals, regardless of age or background, can access the nourishment, connection, and care they need to thrive.

MISSION

To meet the nutritional, safety, and social needs of those we serve so they can maintain healthy and independent lifestyles.

VALUES

Our values—**C**ompassion, **A**ccountability, **R**espect, **E**xcellence, and **S**teadfastness (**CARES**)—guide everything we do at Meals on Wheels of Rhode Island. We commit our board of directors, team, and volunteers to uphold these principles in every interaction—with one another, with those we serve, and with our broader community.

GUIDING STRENGTHS

MOWRI's strategic work has well positioned the organization and we will build upon our success to date:

- Well-established foundation for strategic growth
- Expanded role in health, aging, and equity ecosystems
- Embrace of innovation as a core growth tool
- Strengthening of partnerships as growth accelerators



Meals on Wheels
OF RHODE ISLAND